

# Fact Sheet

## Apply Seizing

16.09.2010

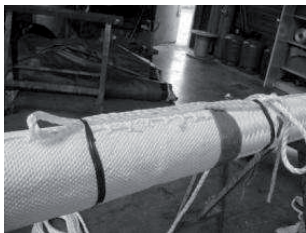
Suggest to use a dia 8mm braided Polyamide Rope or similar, for seizings  
(the length of the rope is depending on the diameter of the rope and the width of the seizing)

Put some slight tension on the rope and for easy handling the rope should be left of the ground ( $\pm 1\text{m}$ ).

### 1. Seizing on the end of the splice or on the cover

Seizing width:

- on the end of the splice: 50cm
- on the cover: depending on the damage (width of damage + min 10cm extra on each side)



Put a loop parallel on the rope and preliminary fix with tape



At the end of the seizing: Put the end of the seizing rope through the loop



Wind the seizing rope around the rope...



At the beginning of the seizing: Pull the loop underneath the seizing by hand or with the help of a lifting device



...until the correct width is reached



Apply a knot at each end of the seizing



Pull the seizing with a lifting device. If there's no lifting device present, pull the seizing after each winding tied by hand.



# Fact Sheet

## Apply Seizing

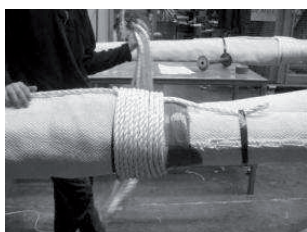
### 2. Apply Seizing on the eye



Place a loop with the seizing rope parallel on the rope and preliminary fix with tape



At the beginning of the seizing: Pull the loop underneath the seizing by hand or with the help of a lifting device



Wind the seizing rope around the rope



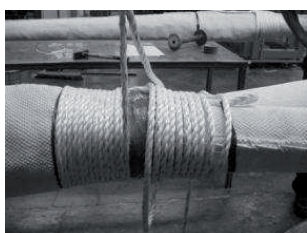
Bring to two loose ends of the seizing rope together at the end of the seizing, cross and wrap around one leg



Stop when the correct width is received



Apply a knot between the two ends



Pull tied by hand or by using a lifting device if present



Apply stopping knots on each end of the seizing rope



At the end of the seizing: Put the end of the seizing rope through the loop